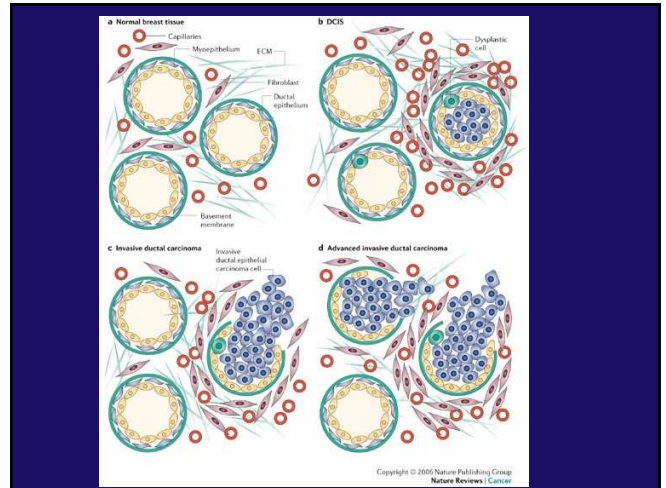
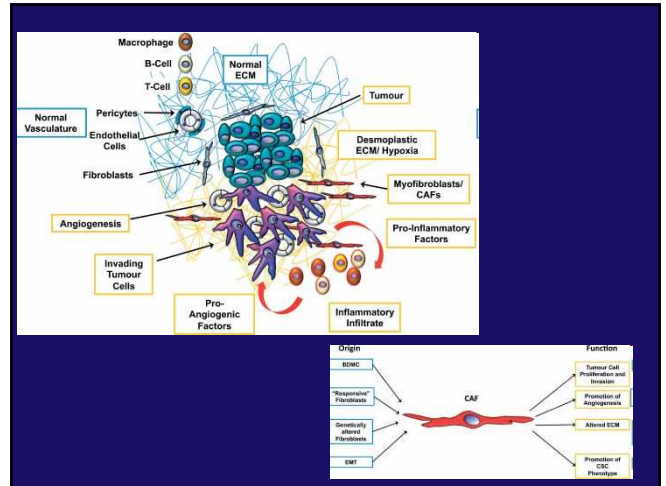
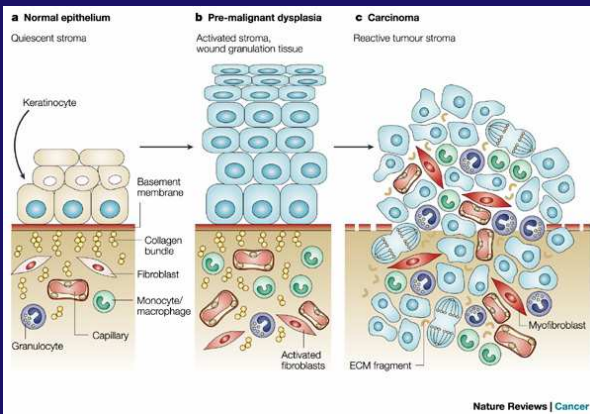


TUMOUR - STROMA INTERACTION IN CANCER METASTASIS: Role of FIBROBLASTS and of ANGIOGENESIS



Extracellular matrix in CANCER



CANCER ASSOCIATED FIBROBLASTS

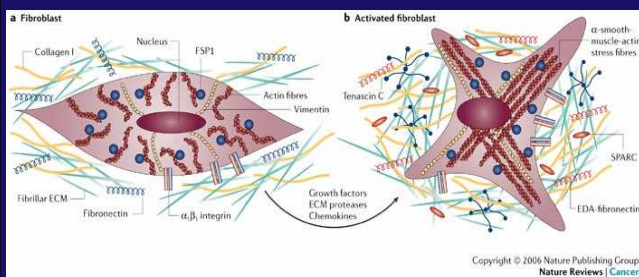
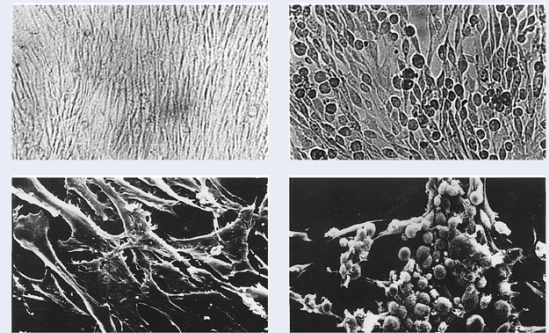
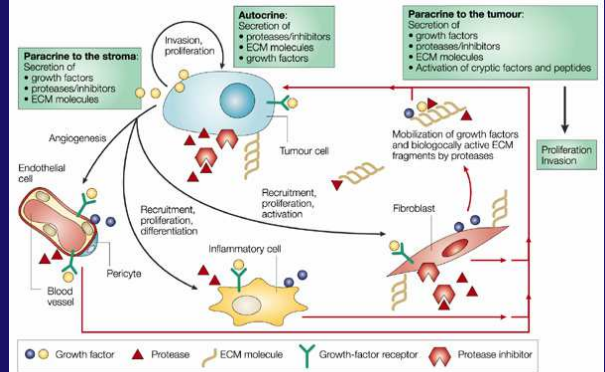
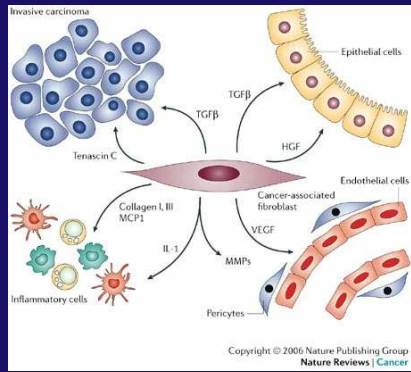
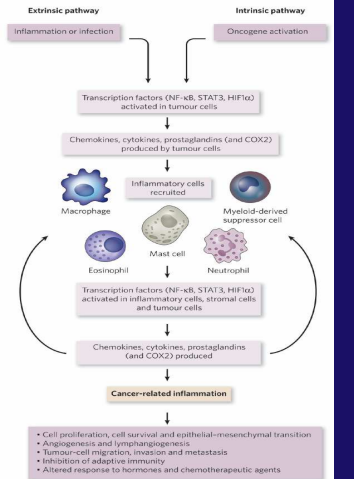


Figure 2B.2. Normal fibroblasts grow as a layer of flat, spread-out cells, whereas transformed fibroblasts are rounded up and grow in cell masses. The cultures on the left contain normal cells, those on the right contain transformed cells. The top views are by conventional microscopy, the bottom by scanning electron microscopy. Photographs kindly provided by Hidesaburo Hanafusa and J. Michael Bishop.

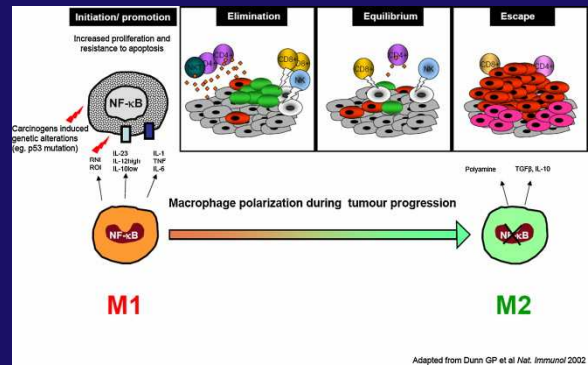




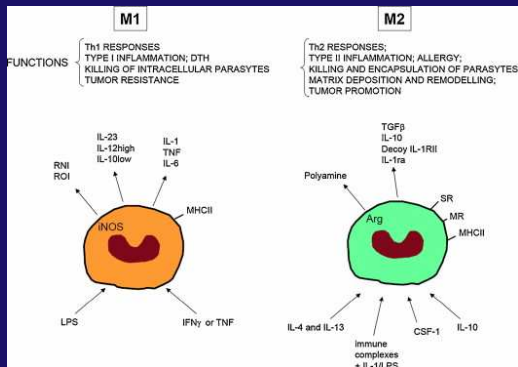
INFLAMMATION IN CANCER



M1/M2 MACROPHAGE POLARIZATION



EFFECTS of M1/M2 macrophage polarization



INDUCTION OF EPITHELIAL-TO-MESENCHYMAL TRANSITION

